

BID PROPOSAL

For the work included in the Contract for:

Furniture

Northbrook Public Library
1201 Cedar Lane
Northbrook, IL 60062

Sealed bids marked “**FURNITURE**” on the outside of the envelope will be received until **3:00 p.m., prevailing time, on Monday, November 23, 2020**, by the Board of Library Trustees, Northbrook Public Library, Cook County, Illinois, for the **Furnishings: Interior Renovations Project**. Provide firm name and bid package label (FURNITURE) on the outside of the sealed envelope.

Proposals complying with the bid documents will be received for the project until the specified closing time. Bids shall be submitted on or before the specified closing time in an opaque sealed envelope marked as noted on the outside and addressed to: Kate Hall, Director, Northbrook Public Library, Northbrook, IL. **Bids are to be delivered to Northbrook Public Library, 1201 Cedar Lane, Northbrook, IL 60062. Bids will be opened and read aloud at 4:30 P.M. local time on Monday, November 23, 2020 via Zoom. Zoom link**

<https://zoom.us/j/98340603506?pwd=VWlqM0xSQkpWSEoyLzIqMDVjT2J1QT09>

+1 312 626 6799

Meeting ID: 983 4060 3506

Passcode: 774421

Bid security in the form of a bid bond or certified check made payable to the Board of Library Trustees, Northbrook Public Library equal to 10% of the base bid amount shall be submitted with the bid. Certificate of Insurance will be required from the successful bidder.

In submitting this proposal, the bidder agrees:

1. Not to withdraw the proposal for a period of 120 days after receipt of bids. Bids shall include any price increases that may occur due to May 2021 delivery date.
2. To receive purchase order, if awarded on the basis of this proposal, and to furnish contract bonds within 10 days of a Written Notice of Award.
3. To provide and install furnishings in accordance with the Contract Documents and attached bidder requirements.
4. The bidder understands that the Library is a tax-exempt organization.
5. Bidder may elect to utilize any available consortium pricing for government entities.
6. This contractor is to remove from the project site all debris generated from this scope of work. This would include, but is not limited to; all dunnage, plastic wrap, cardboard, etc. All floor protection that is required for the delivery and/or disposal of materials is the responsibility of this contractor to complete, including removal. All deliveries must be coordinated in advance with the Library point of contact.
7. The furniture delivery and installation is to occur in one phase. Anticipated delivery will be May 2021. Final date to be coordinated with general contractor and owner. These are approximate.
8. The Owner reserves the right to waive irregularities, technicalities and formalities and to reject any or all proposals.

9. All bidders must comply with applicable Illinois Law requiring the payment of **prevailing wages** for any furniture requiring assembly by all Installers working on public works. If furniture does not require assembly, prevailing wage is not required.

FURNITURE BID PACKAGE 1: HON

STIPULATED SUM: Having examined the Drawings including the Addenda numbered _____, the Undersigned proposes to furnish all labor and materials called for by said documents for work indicated in the following Base Bid, for "Interior Renovation at Northbrook Public Library " as set forth in the Contract Documents, for the following sums:

BASE BID: _____ DOLLARS (\$ _____)

Bidder shall submit itemized pricing attached to bid document for each line item in the bid package.

Date _____

Signature _____

Firm Name _____

Name _____

Address _____

FURNITURE BID PACKAGE 2: COALESSE PRODUCTS

STIPULATED SUM: Having examined the Drawings including the Addenda numbered _____, the Undersigned proposes to furnish all labor and materials called for by said documents for work indicated in the following Base Bid, for "Interior Renovation at Northbrook Public Library " as set forth in the Contract Documents, for the following sums:

BASE BID: _____ DOLLARS (\$ _____)

Bidder shall submit itemized pricing attached to bid document for each line item in the bid package.

Date _____

Signature _____

Firm Name _____

Name _____

Address _____

BIDDER QUALIFICATIONS/ CONTRACT REQUIREMENTS:

1. Bids shall be accompanied by a bid guaranty in an amount of not less than ten percent (10%) of the total bid. The Bid guaranty shall be either a certified check made payable to Northbrook Public Library or a bid bond with Power of Attorney attached, issued by a solvent surety authorized by the State of Illinois. Should bidder refuse to enter into a Contract or fail to furnish fully executed contract documents, performance and payment bonds where applicable, or certificates of insurance to the Library within 14 calendar days from the date that the Library sends the Notice of Award to that bidder, the Bid Security may be forfeited to the Library as liquidated damages, not as penalty.
2. Contractor acknowledges full and sole authority for all safety programs and precautions in connection with the work.
3. The responsibilities/liabilities of the Library and the Contractor and their consultants, agents and employees and any concomitant damages and/or consequential damages shall be determined in such amount and to such extent as provided by Illinois Law.
4. Contractor shall pay all reasonable attorneys' fees, experts' fees, and costs incurred by the Library in enforcing terms and provisions of this agreement and in defending any proceeding to which the Library is made a party as result of the acts or omissions of the Contractor.
5. Any applicable statute of limitations shall commence to run and any alleged cause of action shall be deemed to have accrued in accordance with Illinois Law.
6. Contractor shall defend, indemnify, and hold harmless the Library from and against legal liability for all claims, losses, damages, and expenses to the extent such claims, losses, damages or expenses are caused by Contractor's conduct, acts, errors or omissions.
7. In an effort to resolve any conflicts that arise under this contract, prior to commencing litigation all disputes between the Library and the Contractor arising out of or relating to this Contract shall be submitted to non-binding mediation. After such non-binding mediation and, unless the parties agree to submit to binding arbitration, any claims, disputes, liabilities of the parties or other matters between the Library and the Contractor shall be resolved in the Circuit Court of Cook County in accordance with Illinois law.
8. Insurance Requirements: Contractor shall provide all required insurance covered under this section. The Contractor shall require Subcontractors to also assume all of the duties and requirements in this section. The Contractor shall require the Subcontractor to provide Certificates of insurance evidencing the insurance required by this section including naming the additional insureds.
 - a. Commercial General and Umbrella Liability Insurance: Contractor shall maintain commercial general liability and, if necessary, commercial umbrella insurance with a limit of not less than \$2,000,000 per occurrence.
 - b. Automobile Liability Insurance: Contractor shall maintain automobile liability with a limit of not less than \$1,000,000 per accident. Such insurance shall cover liability arising out of any auto
 - c. Workers' compensation insurance: Contractor shall maintain workers' compensation and employer's liability insurance. The employer's liability limits shall not be less than \$1,000,000 each accident for bodily injury and \$1,000,000 each employee for bodily injury by disease.
 - d. Additional requirements: All policies of insurance shall be written with a company qualified to do business in the State of Illinois and rated A-VIII or better in the current A.M. Best rating guide. The Northbrook Public Library , Architect, and their respective officers and employees shall be included as insured parties under the Commercial General Liability Insurance.

9. Work will not begin nor will any payment be authorized absent submission by the Contractor to the Library of proof of insurance coverage.

Date_____

Firm Name_____

Address_____

Signature_____

Printed Name_____

Title_____

NORTHBROOK PUBLIC LIBRARY FURNITURE SPECIFICATIONS

BID PACKAGE 1: HON

product architecture + design

DELIVERY DATE: MAY 1, 2021

Tag #	Alternate	Item	Description	Quantity
STAFF LOUNGE:				
T1A		CAFÉ TABLE LARGE	HON PRESIDE 60"W X 30" X 29.5" H TABLE; TOP: SILVER MESH B9; MATCHING PVC EDGE; PRESIDE ANGLE LEGS FINISH: PLATINUM METALLIC T1; GLIDES FOR LVT	1
T1B		CAFÉ TABLE SMALL	HON PRESIDE 30"W X 30" X 29.5" H TABLE; TOP: SILVER MESH B9; MATCHING PVC EDGE; PRESIDE ANGLE LEGS FINISH: PLATINUM METALLIC T1; GLIDES FOR LVT	2

CIRC OFFICE, WORKROOM AND HUDDLE ROOM:

		HON FURNITURE	REFER TO ATTACHED HON SPECS AND DRAWINGS	
--	--	---------------	---	--

NORTHBROOK PUBLIC LIBRARY FURNITURE SPECIFICATIONS

BID PACKAGE 2: COALESSE

product architecture + design

DELIVERY DATE: MAY 1, 2021

Tag #	Alternate	Item	Description	Quantity
STAFF LOUNGE:				
C2		LOUNGE CHAIR	COALESSE JOEL W/ AUTO SWIVEL RETURN MECHANISM; COM: STEELCASE BRISA IRON BR26; GLIDES FOR CARPET	2
T2		LAPTOP TABLE	COALESSE LAGUNITAS PERSONAL LAPTOP TABLE; FUSION FABRIC TOP: CL62 GRAPHITE; BASE: 4180 GRAPHITE MATTE; GLIDES FOR CARPET	3
C3A		SOFA	COALESSE SISTEMA 2-SEATER MID-BACK LOUNGE; CYLINDER METAL LEG; UPHOLSTERED NARROW ARM; INTEGRATED POWER MODULE; MOVEABLE TABLE: ; MOVEABLE ARM BOLSTER/SEAT/BACK COM: DESIGNTEX EVERYWHERE TEXTURE DENIM 4147-406; GLIDES FOR CARPET	1

WELLNESS ROOM:

C3B		SOFA	COALESSE SISTEMA 2-SEATER MID-BACK LOUNGE; CYLINDER METAL LEG; UPHOLSTERED NARROW ARM; INTEGRATED POWER MODULE; MOVEABLE TABLE; SEAT/BACK COM: DESIGNTEX RISE POOL 3809-403; GLIDES FOR CARPET	1
C4		OTTOMAN	COALESSE SISTEMA ROUND OTTOMAN; COM: STEELCASE BRISA IRON BR26; GLIDES FOR CARPET	1

NORTHBROOK PUBLIC LIBRARY FURNITURE SPECIFICATIONS

BID PACKAGE 3: OPEN LINES

product architecture + design

DELIVERY DATE: MAY 1, 2021

Tag #	Alternate	Item	Description	Quantity
LOBBY:				
C5		LOBBY OTTOMAN	SOURCE INTERNATIONAL SCAPE OTTOMAN 5524 30"W X 30"D X 17" H; COM: ULTRALEATHER BRISA DISTRESSED IRON 535- 5679; LEGS: TBD; GLIDES FOR LVT	4

STAFF LOUNGE:				
C1		CAFÉ CHAIR	SITONIT RIO 4-LEG SIDE CHAIR; PLASTIC SHELL: NAVY; FRAME FINISH: SILVER; GLIDES FOR LVT	8

LOBBY: 3 BRANCH https://3branch.com/contact/				
D1		SERVICE DESK	3 BRANCH KURVE SERVICE DESK KIDNEY SHAPE; STANDARD 72" W X 30" D SIZE; 29- 41"H; ELECTRIC, HEIGHT ADJUSTABLE BASE W/ MEMORY KEYPAD; TOP: CORIAN ANTARCTIC; CURVED MODESTY PANEL: MAPLE VENEER FRONT ; FRAME: POWDERCOAT FINISH: PLATINUM METALLIC; LOCKING CASTERS, 2 GROMMETS; WIRE MANAGEMENT LEG CHANNEL; CASTERS FOR HARD SURFACE	2
SC1		SELF-CHECK SCREENS 48" W	3BRANCH PLEXIGLASS SHIELD 48"W X 36"H SH- POS-RF-4836	4
SC2		SELF-CHECK SCREENS 24" W	3BRANCH PLEXIGLASS SHIELD 24"W X 36"H SH- POS-RF-2436	4

NORTHBROOK PUBLIC LIBRARY FURNITURE SPECIFICATIONS

BID PACKAGE 4: SHELVING

product architecture + design

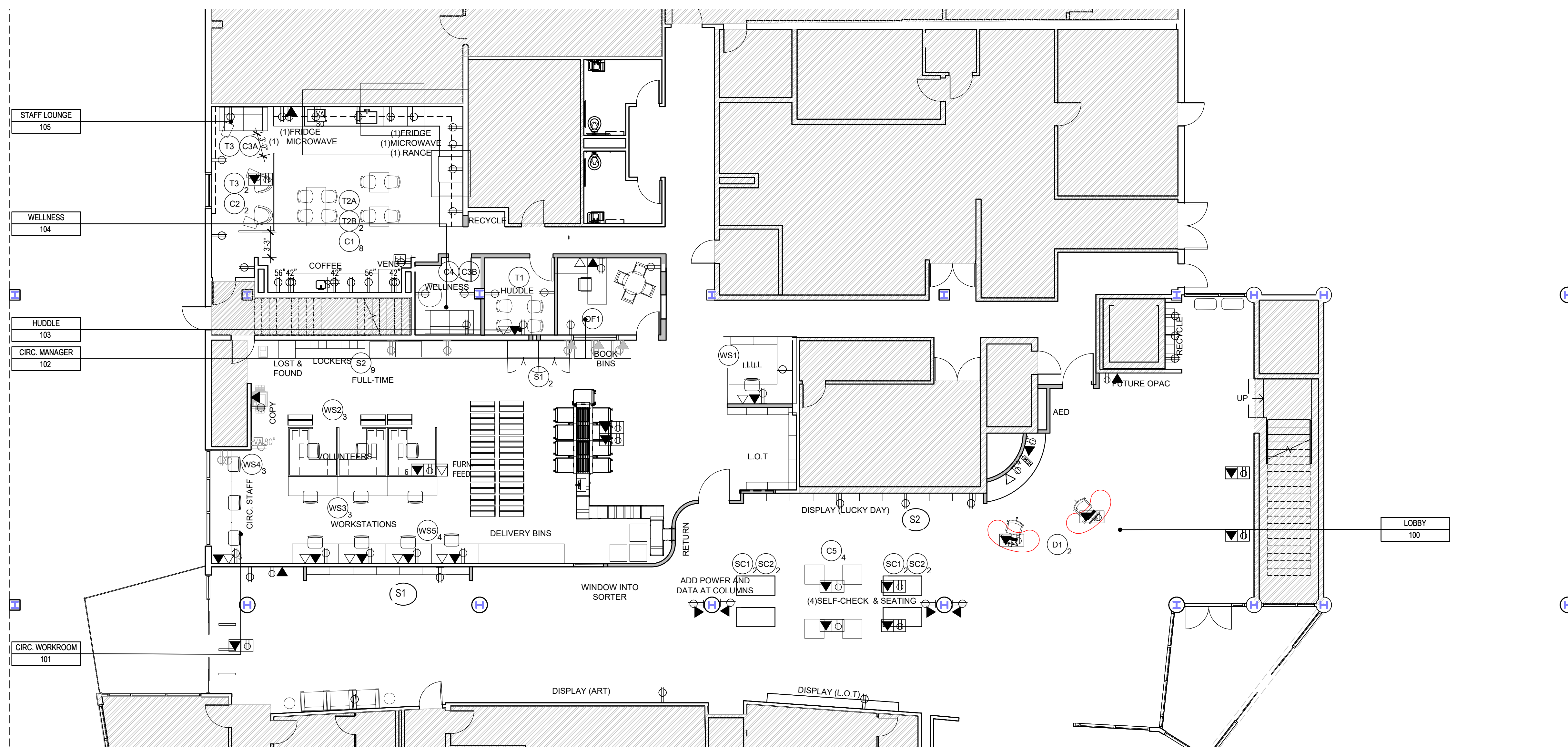
DELIVERY DATE: MAY 1, 2021

Tag #	Alternate	Item	Description	Quantity
SHELVING:				
S1		HOLDS SHELVING	66"H SF ESTEY DESIGNER SERIES; 25 DEGREE BASE SHELF & 10 DEGREE SHELF W/ 3 FLAT SHELVES ABOVE; PREMIUM COLOR; NO SIGNS	7
S2		NEW MATERIALS	78"H SF ESTEY DESIGNER SERIES A-FRAME; 6H 8" DEEP SHELVES; LAMINATE BACK PANEL: PREMIUM WILSONART; PREMIUM COLOR; INCLUDE 4" SIGNS	10
		END PANELS FOR NEW MATERIALS	78"H STEEL END PANELS	2

description	issue date
ISSUE FOR B.D.	08.21.20
ISSUE FOR PERM.	08.21.20



Tiffany L. Nash
08.11.20



1 level 1 furniture plan
scale: 1/8"=1'-0"

drawing:
level 1 furniture plan

project:
Northbrook Public Library
1201 Cedar Ln,
Northbrook, IL 60062

project number:	1024
drawn by:	WJ
approved by:	WJ
drawing scale:	1/8"=1'-0"
date issued:	

sheet number:
A8.0
sheet ___ of ___

Qty	Part Number	Options	Description	List	Ext. List
OFFICE 1					
1	H38935		38000 72"W 30"D 29-1/2"H Modular Desk Shell	\$1,139.00	\$1,139.00
		\$(L1STD)	Grd L1 Standard Laminates		
		.C	LAM: Harvest		
		\$(P1)	P1 Paint Opts		
		.Q	Light Gray		
1	H38944L		38000 Series Return Left 48"W 24"D 29-1/2"H	\$815.00	\$815.00
		\$(L1STD)	Grd L1 Standard Laminates		
		.C	LAM: Harvest		
		\$(P1)	P1 Paint Opts		
		.Q	Light Gray		
1	HEOHRTA1572FD		15H x 13"D x 72W Flipper Door Overhead	\$813.00	\$813.00
		\$(P1)	P1 Paint Opts		
		.Q	Light Gray		
2	HTWTH		Acc Hrztl Wall Track for OH Storage-60"W	\$83.00	\$166.00
		.P	Paint: Black		
1	HH870960		Tasklight 60W	\$270.00	\$270.00
1	H18723R		Flagship Series Pedestal "R" Pull Mobile B/B/F 23D	\$730.00	\$730.00
		.L	Standard Random Key Lock		
		\$(P1)	P1 Paint Opts		
		.Q	Light Gray		
1	H18823R		Flagship Series Pedestal "R" Pull Mobile F/F 23D 2	\$723.00	\$723.00
		.L	Standard Random Key Lock		
		\$(P1)	P1 Paint Opts		
		.Q	Light Gray		
1	HTLD36		Preside 36" Round Shaped Laminate Top	\$440.00	\$440.00
		.G	2MM/Flat		
		C	Edge: Harvest		
		.N	No Grommets		
		\$(L1STD)	Grd L1 Standard Laminates		
		.C	LAM: Harvest		
1	HTXLEG		Preside Aluminum X-Leg	\$501.00	\$501.00
		\$(P1)	P1 Paint Opts		
		.PJW	Designer White		
1	HLSL72TW		Tackboard for 72" W Wallmount Tackboard	\$364.00	\$364.00
		\$(A)	Grd A Fabric		
		.SRT	FABRIC: Sarto		
		88	COLOR: Ash		
				Total OFFICE 1	\$5,961.00
S1					
2	HFSC183664R		Flagship Stg Cab 64 1/4Hx36Wx18D R Pulls&4 Adj Shlf	\$1,546.00	\$3,092.00
		.L	Standard Random Key Lock		
		\$(P1)	P1 Paint Opts		
		.Q	Light Gray		
				Total S1	\$3,092.00
S2					
9	HSCLP651218RME		Contain 65Hx12Wx18D CubbyLckr Plinth MtIFrt RH 4 Dr eLock	\$2,348.00	\$21,132.00
		.BX	Recessed Plinth		
		.E	Keypad Electronic Lock		
		\$(P1)	P1 Paint Opts		
		.Q	Light Gray		
		\$(P1)	P1 Paint Opts		
		.NA	Match Case		
1	HSLDIGMGR		Digilock Manager Key	\$125.00	\$125.00
1	HSLDIGPRG		Digilock Programming Key	\$160.00	\$160.00
				Total S2	\$21,417.00
T1					
1	HTLC3060		Preside 60W x 30D Rectangular Shaped Laminate Top	\$493.00	\$493.00

Qty	Part Number	Options	Description	List	Ext. List
		.G	2MM/Flat		
		C	Edge: Harvest		
		.N	No Grommets		
		\$(L1STD)	Grd L1 Standard Laminates		
		.C	LAM: Harvest		
1	HTTLEG60		Preside Aluminum T leg for 60" Table Tops	\$631.00	\$631.00
		\$(P1)	P1 Paint Opts		
		.PJW	Designer White		
				Total T1	\$1,124.00
WORKSTATION 1					
2	HEFEC65P		Panel Finished End Covers 65H	\$63.00	\$126.00
		\$(P1)	P1 Paint Opts		
		.Q	Light Gray		
1	HEOHRTA1572FD		15H x 13"D x 72W Flipper Door Overhead	\$813.00	\$813.00
		\$(P1)	P1 Paint Opts		
		.Q	Light Gray		
3	HETC48		Panel Top Cap 48"W	\$66.00	\$198.00
		\$(P1)	P1 Paint Opts		
		.Q	Light Gray		
1	HETP6548DP		Tackable Top Tier Glass Panel w/o TC 65H x 48W	\$710.00	\$710.00
		\$(A)	Gr A Fabric		
		.SRT	FABRIC: Sarto		
		88	COLOR: Ash		
		\$(P1)	P1 Paint Opts		
		.Q	Light Gray		
		.R	Glass: Frosted		
2	HETP6548FP		Tackable Panel w/o TC 65H x 48W	\$470.00	\$940.00
		\$(A)	Gr A Fabric		
		.SRT	FABRIC: Sarto		
		88	COLOR: Ash		
		\$(P1)	P1 Paint Opts		
		.Q	Light Gray		
2	HEWS65P		Wall Starter Kit for Panels 65H	\$103.00	\$206.00
		\$(P1)	P1 Paint Opts		
		.Q	Light Gray		
1	HCKTTPS		Straight Connector Kit	\$19.00	\$19.00
		.X	No Option		
1	HSDCMP4814		Stand-Alone Cnr 14Hx48W Mod Pnl	\$183.00	\$183.00
		\$(P1)	P1 Paint Opts		
		.Q	Light Gray		
1	HSDCMP7214		Stand-Alone Cnr 14Hx72W Mod Pnl	\$197.00	\$197.00
		\$(P1)	P1 Paint Opts		
		.Q	Light Gray		
1	HSDDL29		29.5"H Corner Desk Leg	\$165.00	\$165.00
		\$(P1)	P1 Paint Opts		
		.Q	Light Gray		
1	HSDEP2429F		24"D End-Panel Supports: Freestanding	\$194.00	\$194.00
		\$(P1)	P1 Paint Opts		
		.Q	Light Gray		
1	HSDEP3029F		30"D End-Panel Supports: Freestanding	\$216.00	\$216.00
		\$(P1)	P1 Paint Opts		
		.Q	Light Gray		
1	HSDMP244		Half Hgt 14Hx24W Mod Pnl	\$164.00	\$164.00
		\$(P1)	P1 Paint Opts		
		.Q	Light Gray		
1	HSDMP484		Half Hgt 14Hx48W Mod Pnl	\$183.00	\$183.00
		\$(P1)	P1 Paint Opts		
		.Q	Light Gray		

Qty	Part Number	Options	Description	List	Ext. List
1	HSDSL2429F		24"D Support Leg: Freestanding	\$203.00	\$203.00
		\$(P1)	P1 Paint Opts		
		.Q	Light Gray		
1	HSDSL3029F		30"D Support Leg: Freestanding	\$230.00	\$230.00
		\$(P1)	P1 Paint Opts		
		.Q	Light Gray		
2	HTWTH		Acc Hrztl Wall Track for OH Storage-60"W	\$83.00	\$166.00
		.P	Paint: Black		
1	HH870960		Tasklight 60W	\$270.00	\$270.00
1	HWR2448P		Systems Rectangular Worksurface Edgeband 24D x 48W	\$404.00	\$404.00
		\$(L1STD)	Grd L1 Standard Laminates		
		.C	LAM: Harvest		
		.C	EDGE: Harvest		
		.Q	Grommet: Light Gray		
1	HWR3024P		Systems Rectangular Worksurface Edgeband 30D x 24W	\$320.00	\$320.00
		\$(L1STD)	Grd L1 Standard Laminates		
		.C	LAM: Harvest		
		.C	EDGE: Harvest		
		.Q	Grommet: Light Gray		
1	HWV95ABRP		Systems 72x48x24x30Rt Corner Cove Worksurface Edgeband	\$857.00	\$857.00
		\$(L1STD)	Grd L1 Standard Laminates		
		.C	LAM: Harvest		
		.C	EDGE: Harvest		
		.Q	Grommet: Light Gray		
1	H19723R		Flagship Pedestal "R" Pull Freestanding B/B/F	\$719.00	\$719.00
		.L	Standard Random Key Lock		
		\$(P1)	P1 Paint Opts		
		.Q	Light Gray		
1	H19817R		File/file 28"Hx16 7/8"Dx14 15/16"W	\$661.00	\$661.00
		.L	Standard Random Key Lock		
		\$(P1)	P1 Paint Opts		
		.Q	Light Gray		
1	HLSL72TW		Tackboard for 72" W Wallmount Tackboard	\$364.00	\$364.00
		\$(A)	Grd A Fabric		
		.SRT	FABRIC: Sarto		
		88	COLOR: Ash		
				Total WORKSTATION 1	\$8,508.00
WORKSTATION 2/3					
2	HCWR3072PT		Accelerate Rectangle wksfc TEE span 30"D x 72"W	\$625.00	\$1,250.00
		\$(L1STD)	Grd L1 Standard Laminates		
		.C	LAM: Harvest		
		.C	EDGE: Harvest		
		.Q	Grommet: Light Gray		
2	HEC65PL		L Connector 65H	\$155.00	\$310.00
		\$(P1)	P1 Paint Opts		
		.Q	Light Gray		
2	HEC65PT		T Connector 65H	\$155.00	\$310.00
		\$(P1)	P1 Paint Opts		
		.Q	Light Gray		
4	HEFEC65P		Panel Finished End Covers 65H	\$63.00	\$252.00
		\$(P1)	P1 Paint Opts		
		.Q	Light Gray		
2	HETC24		Panel Top Cap 24"W	\$36.00	\$72.00
		\$(P1)	P1 Paint Opts		
		.Q	Light Gray		
10	HETC36		Panel Top Cap 36"W	\$56.00	\$560.00
		\$(P1)	P1 Paint Opts		
		.Q	Light Gray		

Qty	Part Number	Options	Description	List	Ext. List
2	HETC48		Panel Top Cap 48"W	\$66.00	\$132.00
		\$(P1)	P1 Paint Opts		
		.Q	Light Gray		
2	HETP6524FP		Tackable Panel w/o TC 65H x 24W	\$366.00	\$732.00
		\$(A)	Gr A Fabric		
		.SRT	FABRIC: Sarto		
		88	COLOR: Ash		
		\$(P1)	P1 Paint Opts		
		.Q	Light Gray		
2	HETP6536DP		Tackable Top Tier Glass Panel w/o TC 65H x 36W	\$642.00	\$1,284.00
		\$(A)	Gr A Fabric		
		.SRT	FABRIC: Sarto		
		88	COLOR: Ash		
		\$(P1)	P1 Paint Opts		
		.Q	Light Gray		
		.R	Glass: Frosted		
8	HETP6536FP		Tackable Panel w/o TC 65H x 36W	\$414.00	\$3,312.00
		\$(A)	Gr A Fabric		
		.SRT	FABRIC: Sarto		
		88	COLOR: Ash		
		\$(P1)	P1 Paint Opts		
		.Q	Light Gray		
2	HETP6548DP		Tackable Top Tier Glass Panel w/o TC 65H x 48W	\$710.00	\$1,420.00
		\$(A)	Gr A Fabric		
		.SRT	FABRIC: Sarto		
		88	COLOR: Ash		
		\$(P1)	P1 Paint Opts		
		.Q	Light Gray		
		.R	Glass: Frosted		
3	HH870960		Tasklight 60W	\$270.00	\$810.00
4	HH871136		Electrical Pass-Thru Cable 36W 3-1 & 2-2 Systems	\$128.00	\$512.00
4	HH871236		Electrical Power Harness 36W 3-1 & 2-2 Systems	\$204.00	\$816.00
2	HH871501		Duplex Receptacle Circuit 1 3-1 & 2-2 Systems	\$43.00	\$86.00
		.DW	Designer white		
2	HH871502		Duplex Receptacle Circuit 2 3-1 & 2-2 Systems	\$43.00	\$86.00
		.DW	Designer white		
2	HH871503		Duplex Receptacle Circuit 3 3-1 System Only	\$43.00	\$86.00
		.DW	Designer white		
6	HH871504		Duplex Receptacle Circuit 4 3-1 & 2-2 Systems	\$43.00	\$258.00
		.DW	Designer white		
1	HH879072		Base In-Feed Cable Base 3-1 & 2-2 Systems	\$227.00	\$227.00
3	HLSLZ5SC66		54"W External Stiffener	\$101.00	\$303.00
		.P	Color: Black		
2	HRVCLG30		Abound 29"H x 30"D Abound Universal Support Leg	\$215.00	\$430.00
		\$(P1)	P1 Paint Opts		
		.Q	Light Gray		
1	HRVEP3029L		Abound 29"H x 30"D Left End Panel	\$242.00	\$242.00
		\$(P1)	P1 Paint Opts		
		.Q	Light Gray		
1	HRVEP3029R		Abound 29"H x 30"D Right End Panel	\$242.00	\$242.00
		\$(P1)	P1 Paint Opts		
		.Q	Light Gray		
7	HSCKTPS		Straight Connector Kit	\$19.00	\$133.00
		.X	No Option		
1	HWR3072P		Systems Rectangular Worksurface Edgeband 30D x 72W	\$593.00	\$593.00
		\$(L1STD)	Grd L1 Standard Laminates		
		.C	LAM: Harvest		
		.C	EDGE: Harvest		

Qty	Part Number	Options	Description	List	Ext. List
		.Q	Grommet: Light Gray		
3	HCTL242		24D Cantilever One Pair	\$84.00	\$252.00
		\$(P1)	P1 Paint Opts		
		.Q	Light Gray		
1	HHPMC6		Coat Hooks (Package of 6)	\$87.00	\$87.00
		.P	Color: Black		
3	HLSLZ5SC54		42"W External Stiffener	\$93.00	\$279.00
		.P	Color: Black		
3	HRVOH72FM		Abound Overhead-Metal Flipper Door 72"	\$955.00	\$2,865.00
		\$(P1)	P1 Paint Opts		
		.Q	Light Gray		
		.L	Lock: Lock		
3	HWR3036P		Systems Rectangular Worksurface Edgeband 30D x 36W	\$389.00	\$1,167.00
		\$(L1STD)	Grd L1 Standard Laminates		
		.C	LAM: Harvest		
		.C	EDGE: Harvest		
		.Q	Grommet: Light Gray		
3	HWSB2		Worksurface Bracket Kit	\$46.00	\$138.00
		\$(P1)	P1 Paint Opts		
		.Q	Light Gray		
2	HWV93BALP		Systems 72x36x30x24Left Corner Cove Worksurface Edgebd	\$691.00	\$1,382.00
		\$(L1STD)	Grd L1 Standard Laminates		
		.C	LAM: Harvest		
		.C	EDGE: Harvest		
		.Q	Grommet: Light Gray		
1	HWV93BARP		Systems 72x36x30x24Rt Corner Cove Worksurface Edgeband	\$691.00	\$691.00
		\$(L1STD)	Grd L1 Standard Laminates		
		.C	LAM: Harvest		
		.C	EDGE: Harvest		
		.Q	Grommet: Light Gray		
3	H18723R		Flagship Series Pedestal "R" Pull Mobile B/B/F 23D	\$730.00	\$2,190.00
		.L	Standard Random Key Lock		
		\$(P1)	P1 Paint Opts		
		.Q	Light Gray		
3	H19730R		Flagship Pedestal "R" Pull Freestanding B/B/F	\$773.00	\$2,319.00
		.L	Standard Random Key Lock		
		\$(P1)	P1 Paint Opts		
		.Q	Light Gray		
3	H19823R		Flagship Series Pedestal "R" Pull Freestanding F/F	\$712.00	\$2,136.00
		.L	Standard Random Key Lock		
		\$(P1)	P1 Paint Opts		
		.Q	Light Gray		
1	HPD2PNBRK2L		Bracket Left	\$107.00	\$107.00
		~	Undecided PAINT Option		
2	HPD2PNBRK2R		Bracket Right	\$107.00	\$214.00
		~	Undecided PAINT Option		
				Total WORKSTATION 2/3	\$28,285.00
WORKSTATION 4					
2	HSDEP3029F		30"D End-Panel Supports: Freestanding	\$216.00	\$432.00
		\$(P1)	P1 Paint Opts		
		.Q	Light Gray		
4	HSDMP724		Half Hgt 14Hx72W Mod Pnl	\$197.00	\$788.00
		\$(P1)	P1 Paint Opts		
		.Q	Light Gray		
3	HSDSL29		Abode Shared Leg	\$372.00	\$1,116.00
		\$(P1)	P1 Paint Opts		
		.Q	Light Gray		
8	HTWTH		Acc Hrztl Wall Track for OH Storage-60"W	\$83.00	\$664.00

Qty	Part Number	Options	Description	List	Ext. List
		.P	Paint: Black		
1	HLZLZ5SC72		60"W External Stiffener	\$110.00	\$110.00
		.P	Color: Black		
4	HRVOH36FM		Abound Overhead-Metal Flipper Door 36"	\$577.00	\$2,308.00
		\$(P1)	P1 Paint Opts		
		.Q	Light Gray		
		.L	Lock: Lock		
4	HRVSHV36		Abound 15"Dx15"Hx36"W Open Storage	\$716.00	\$2,864.00
		\$(P1)	P1 Paint Opts		
		.Q	Light Gray		
4	HWR3072P		Systems Rectangular Worksurface Edgeband 30D x 72W	\$593.00	\$2,372.00
		\$(L1STD)	Grd L1 Standard Laminates		
		.C	LAM: Harvest		
		.C	EDGE: Harvest		
		.Q	Grommet: Light Gray		
7	HLED17AUO		17"LED Lt w/8"JmprCordDaisyChain(FOLLOWR)	\$377.00	\$2,639.00
4	H19723R		Flagship Pedestal "R" Pull Freestanding B/B/F	\$719.00	\$2,876.00
		.L	Standard Random Key Lock		
		\$(P1)	P1 Paint Opts		
		.Q	Light Gray		
1	HLED17A		17" LED Light W/PwrSupplyForDaisyChain(STARTER)	\$462.00	\$462.00
4	HLZLZ72TW		Tackboard for 72" W Wallmount Tackboard	\$364.00	\$1,456.00
		\$(A)	Grd A Fabric		
		.SRT	FABRIC: Sarto		
		88	COLOR: Ash		

Total WORKSTATION 4 \$18,087.00

WORKSTATION 5

6	HSDEP3029F		30"D End-Panel Supports: Freestanding	\$216.00	\$1,296.00
		\$(P1)	P1 Paint Opts		
		.Q	Light Gray		
3	HSDMP724		Half Hgt 14Hx72W Mod Pnl	\$197.00	\$591.00
		\$(P1)	P1 Paint Opts		
		.Q	Light Gray		
3	HWR3072P		Systems Rectangular Worksurface Edgeband 30D x 72W	\$593.00	\$1,779.00
		\$(L1STD)	Grd L1 Standard Laminates		
		.C	LAM: Harvest		
		.C	EDGE: Harvest		
		.Q	Grommet: Light Gray		
3	H18723R		Flagship Series Pedestal "R" Pull Mobile B/B/F 23D	\$730.00	\$2,190.00
		.L	Standard Random Key Lock		
		\$(P1)	P1 Paint Opts		
		.Q	Light Gray		

Total WORKSTATION 5 \$5,856.00

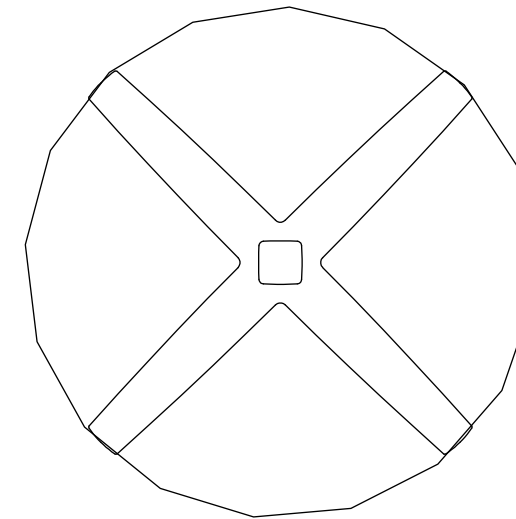
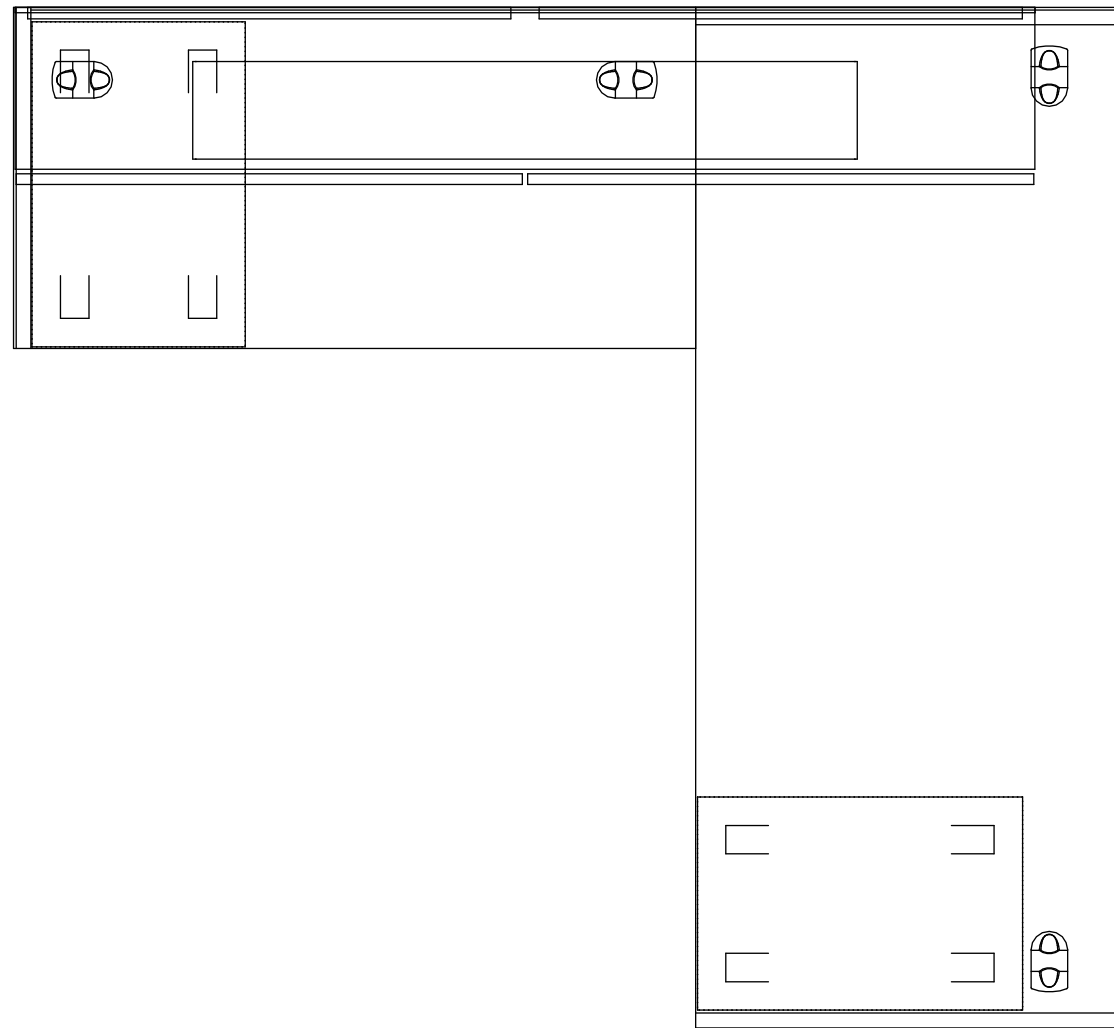
Components	\$92,330.00
Total	\$92,330.00
RunLength	\$1.00
RunLength	\$1.00

DESIGNER:
Collin Coffey
coffeyco@honcompany.com
563.299.2829

DATE:
10/16/2020
7:37:11 AM

PROJECT:
83544-4.cmdrw

NORTHBROOK PUBLIC LIBRARY



NOTE: The customer is ultimately responsible for the accuracy and correctness of component counts and measurements. The customer is also responsible for the space planning and all design work of projects. Customer shall verify and confirm all site conditions, dimensions, and suitability of products and applications consistent with published guidelines and applicable codes. Liability of The HON Company shall be limited to the amount charged for the Specification Services rendered and in no event shall The HON Company be responsible for any consequential or incidental damages.

DRAWING: NOT TO SCALE

DESIGNER:
Collin Coffey
coffeyco@honcompany.com
563.299.2829

DATE:
10/16/2020
7:37:12 AM

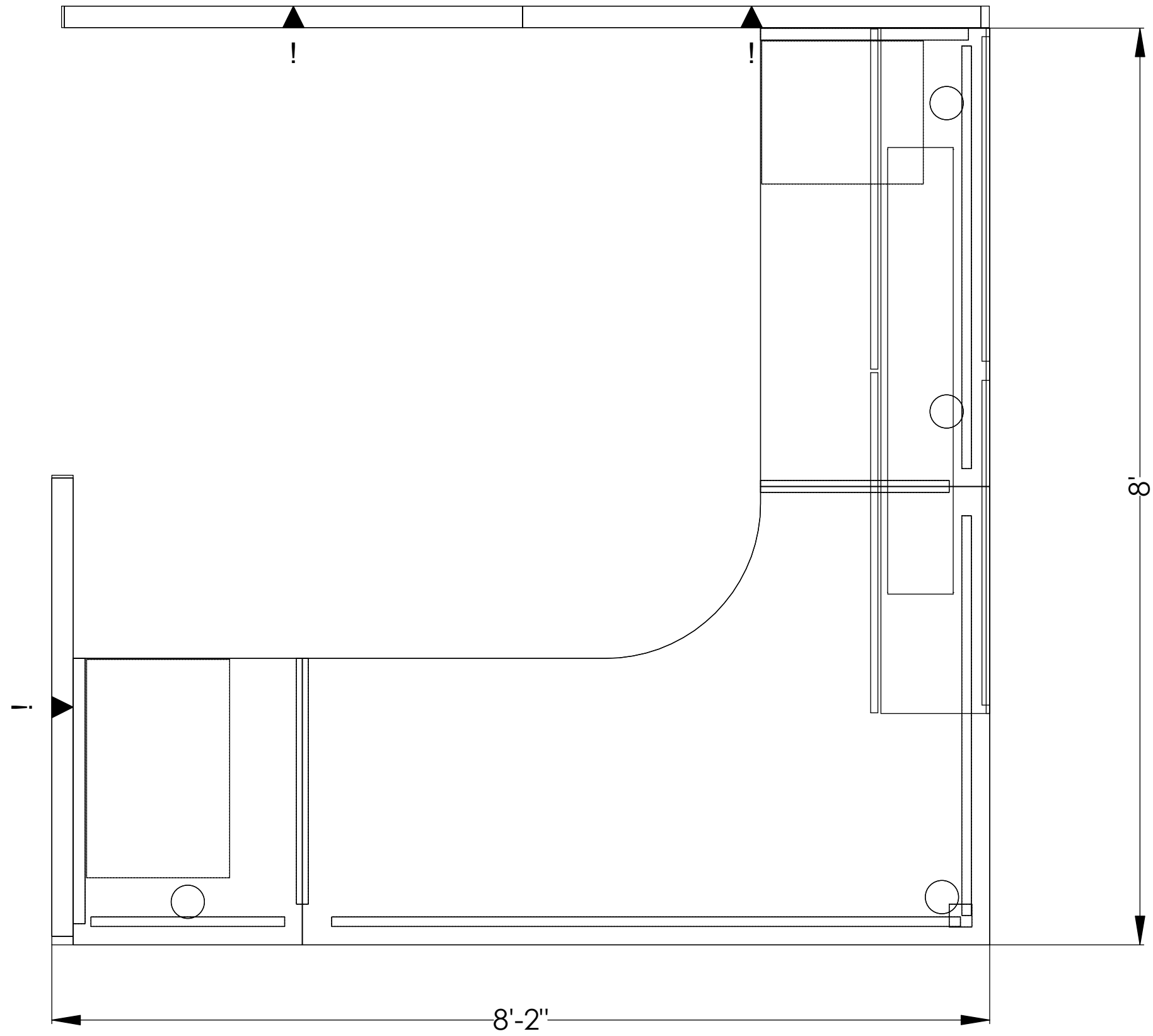
PROJECT:
83544-4.cmdrw

NORTHBROOK PUBLIC LIBRARY



NOTE: The customer is ultimately responsible for the accuracy and correctness of component counts and measurements. The customer is also responsible for the space planning and all design work of projects. Customer shall verify and confirm all site conditions, dimensions, and suitability of products and applications consistent with published guidelines and applicable codes. Liability of The HON Company shall be limited to the amount charged for the Specification Services rendered and in no event shall The HON Company be responsible for any consequential or incidental damages.

DRAWING: NOT TO SCALE



Make your space work.

DESIGNER:
 Collin Coffey
 coffeyco@honcompany.com
 563.299.2829

DATE:
 10/16/2020
 7:37:13 AM

PROJECT:
 83544-4.cmdrw

NORTHBROOK PUBLIC LIBRARY

NOTE: The customer is ultimately responsible for the accuracy and correctness of component counts and measurements. The customer is also responsible for the space planning and all design work of projects. Customer shall verify and confirm all site conditions, dimensions, and suitability of products and applications consistent with published guidelines and applicable codes. Liability of The HON Company shall be limited to the amount charged for the Specification Services rendered and in no event shall The HON Company be responsible for any consequential or incidental damages.

DRAWING: NOT TO SCALE

DESIGNER:
Collin Coffey
coffeyco@honcompany.com
563.299.2829

DATE:
10/16/2020
7:37:15 AM

PROJECT:
83544-4.cmdrw

NORTHBROOK PUBLIC LIBRARY

NOTE: The customer is ultimately responsible for the accuracy and correctness of component counts and measurements. The customer is also responsible for the space planning and all design work of projects. Customer shall verify and confirm all site conditions, dimensions, and suitability of products and applications consistent with published guidelines and applicable codes. Liability of The HON Company shall be limited to the amount charged for the Specification Services rendered and in no event shall The HON Company be responsible for any consequential or incidental damages.

DRAWING: NOT TO SCALE

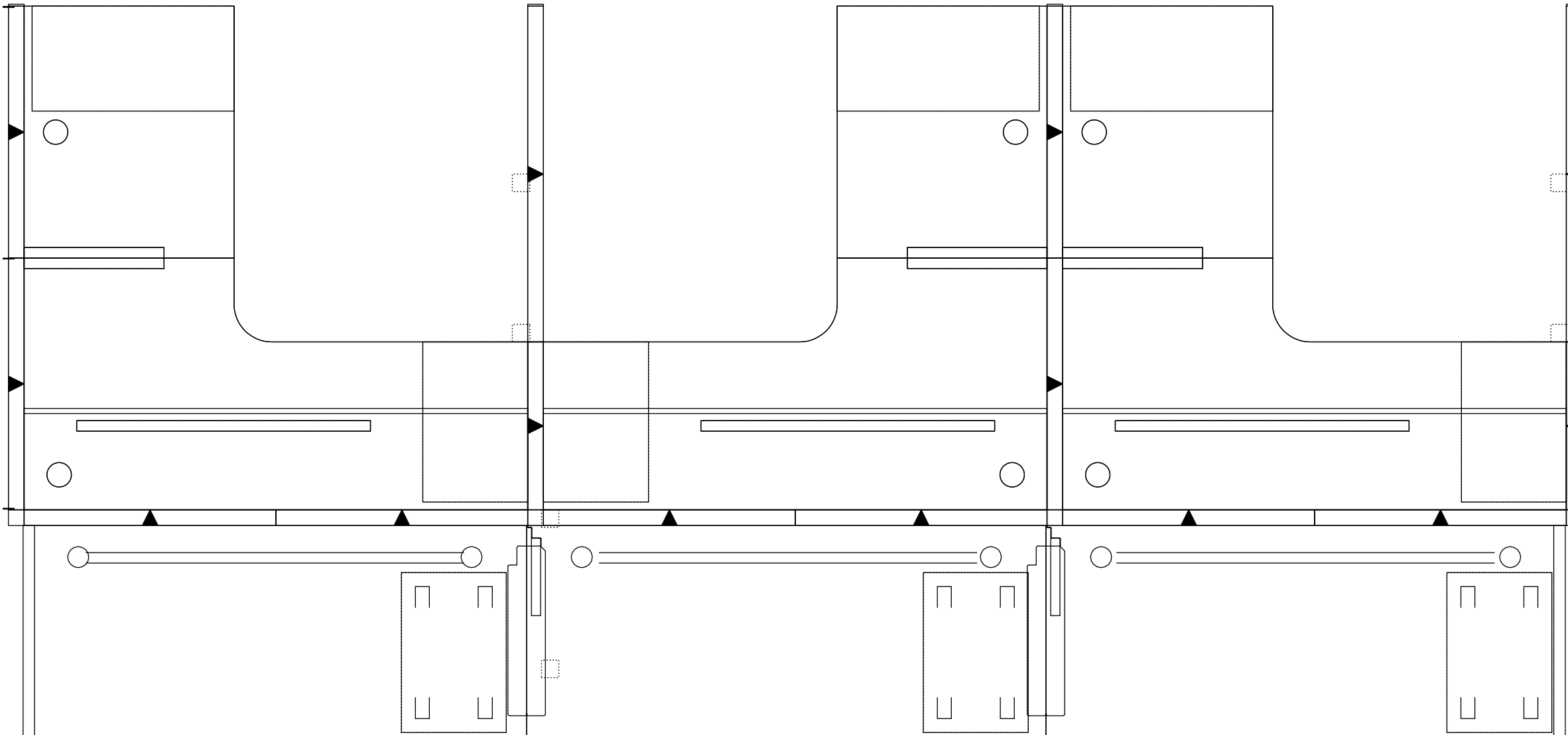


DESIGNER:
Collin Coffey
coffeyco@honcompany.com
563.299.2829

DATE:
10/16/2020
7:37:17 AM

PROJECT:
83544-4.cmdrw

NORTHBROOK PUBLIC LIBRARY



NOTE: The customer is ultimately responsible for the accuracy and correctness of component counts and measurements. The customer is also responsible for the space planning and all design work of projects. Customer shall verify and confirm all site conditions, dimensions, and suitability of products and applications consistent with published guidelines and applicable codes. Liability of The HON Company shall be limited to the amount charged for the Specification Services rendered and in no event shall The HON Company be responsible for any consequential or incidental damages.

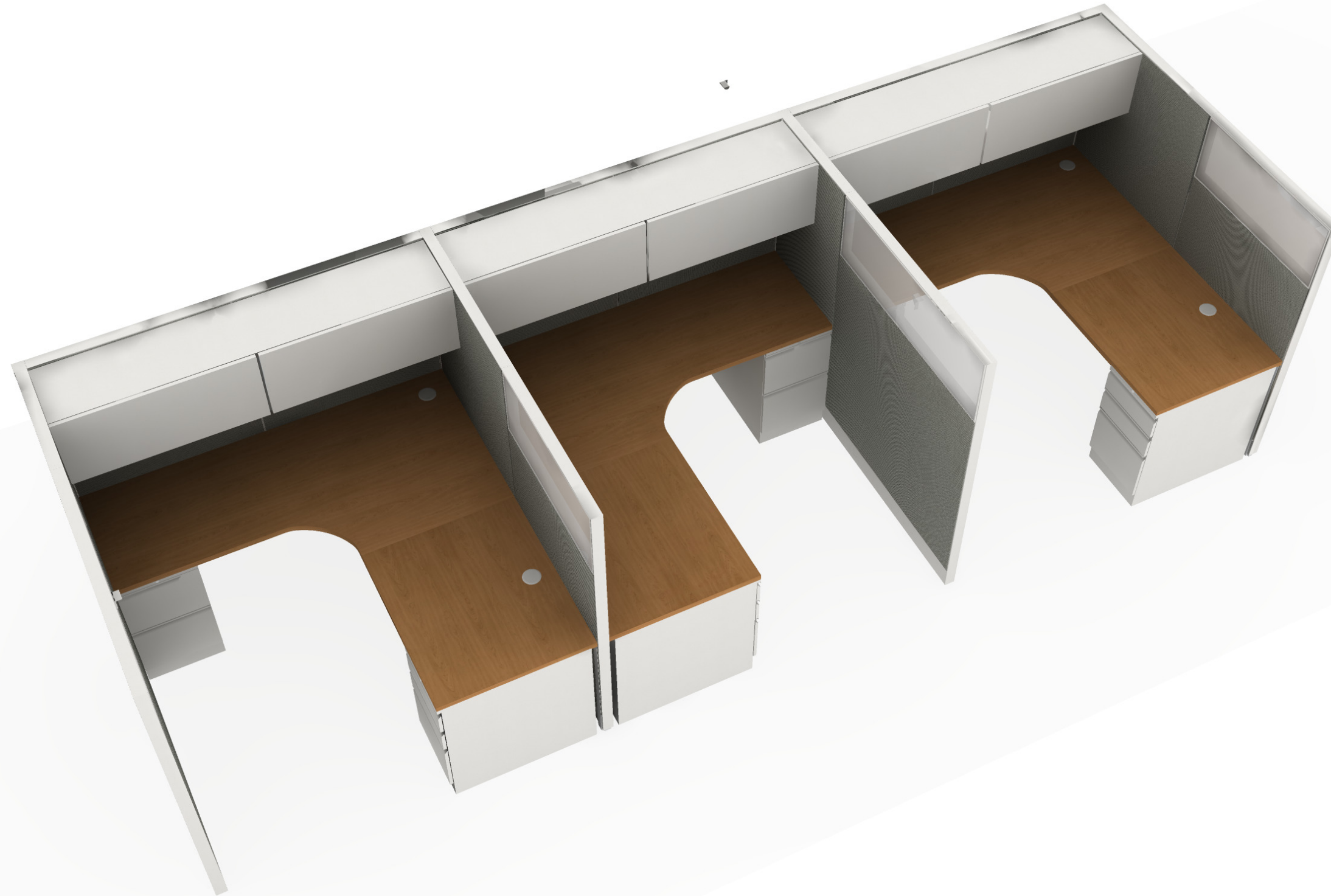
DRAWING: NOT TO SCALE

DESIGNER:
Collin Coffey
coffeyco@honcompany.com
563.299.2829

DATE:
10/16/2020
7:37:18 AM

PROJECT:
83544-4.cmdrw

NORTHBROOK PUBLIC LIBRARY



NOTE: The customer is ultimately responsible for the accuracy and correctness of component counts and measurements. The customer is also responsible for the space planning and all design work of projects. Customer shall verify and confirm all site conditions, dimensions, and suitability of products and applications consistent with published guidelines and applicable codes. Liability of The HON Company shall be limited to the amount charged for the Specification Services rendered and in no event shall The HON Company be responsible for any consequential or incidental damages.

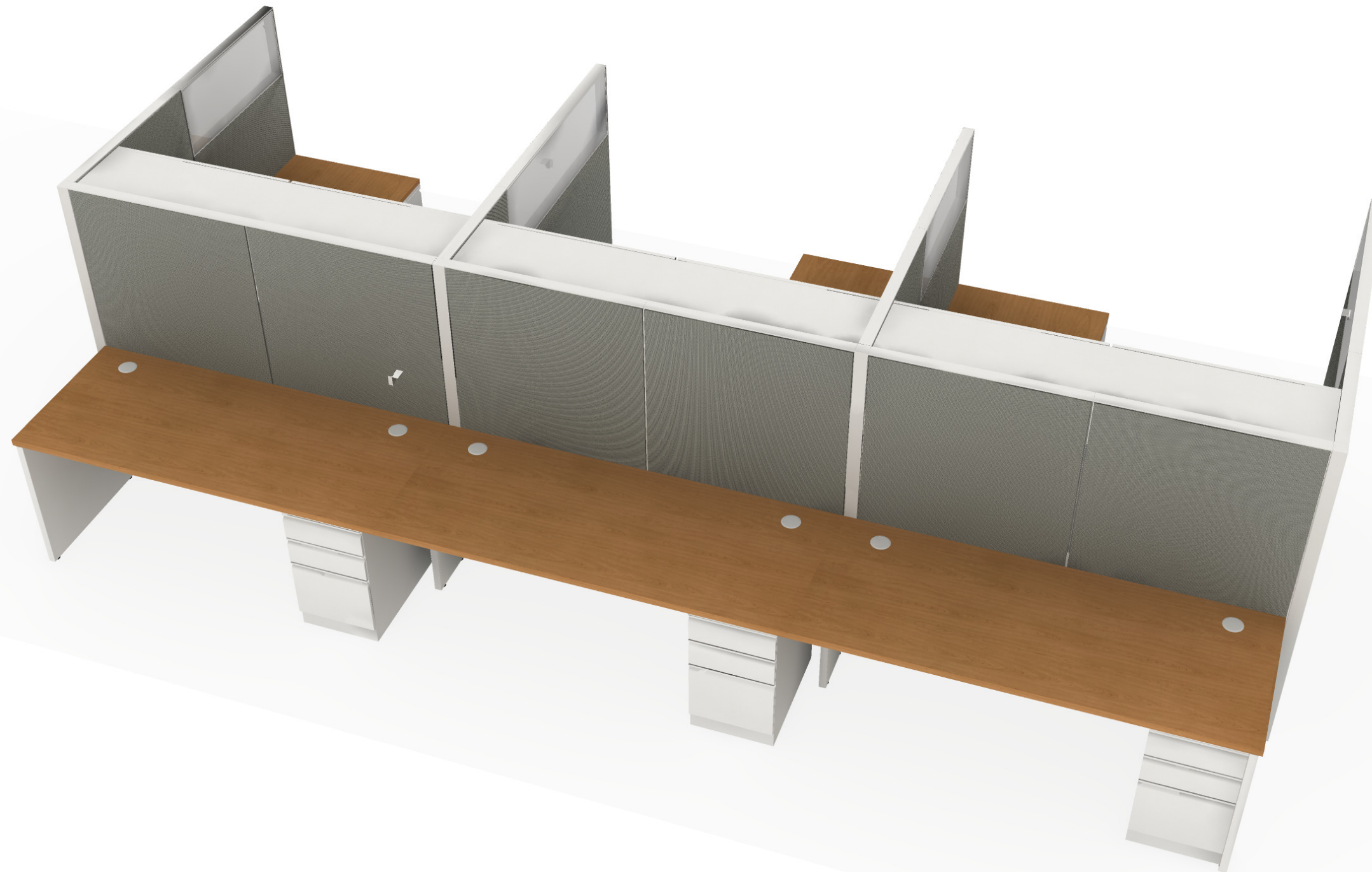
DRAWING: NOT TO SCALE

DESIGNER:
Collin Coffey
coffeyco@honcompany.com
563.299.2829

DATE:
10/16/2020
7:37:20 AM

PROJECT:
83544-4.cmdrw

NORTHBROOK PUBLIC LIBRARY



NOTE: The customer is ultimately responsible for the accuracy and correctness of component counts and measurements. The customer is also responsible for the space planning and all design work of projects. Customer shall verify and confirm all site conditions, dimensions, and suitability of products and applications consistent with published guidelines and applicable codes. Liability of The HON Company shall be limited to the amount charged for the Specification Services rendered and in no event shall The HON Company be responsible for any consequential or incidental damages.

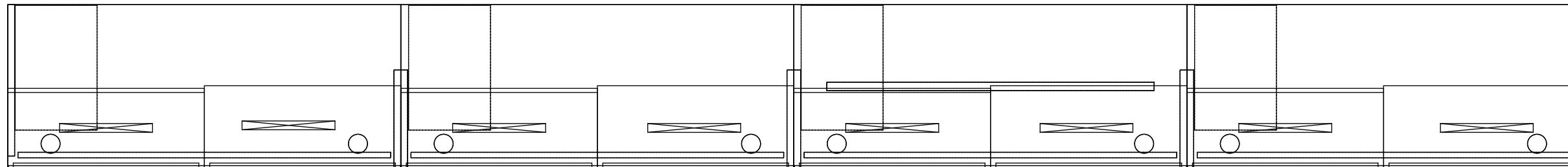
DRAWING: NOT TO SCALE

DESIGNER:
Collin Coffey
coffeyco@honcompany.com
563.299.2829

DATE:
10/16/2020
7:37:22 AM

PROJECT:
83544-4.cmdrw

NORTHBROOK PUBLIC LIBRARY



NOTE: The customer is ultimately responsible for the accuracy and correctness of component counts and measurements. The customer is also responsible for the space planning and all design work of projects. Customer shall verify and confirm all site conditions, dimensions, and suitability of products and applications consistent with published guidelines and applicable codes. Liability of The HON Company shall be limited to the amount charged for the Specification Services rendered and in no event shall The HON Company be responsible for any consequential or incidental damages.

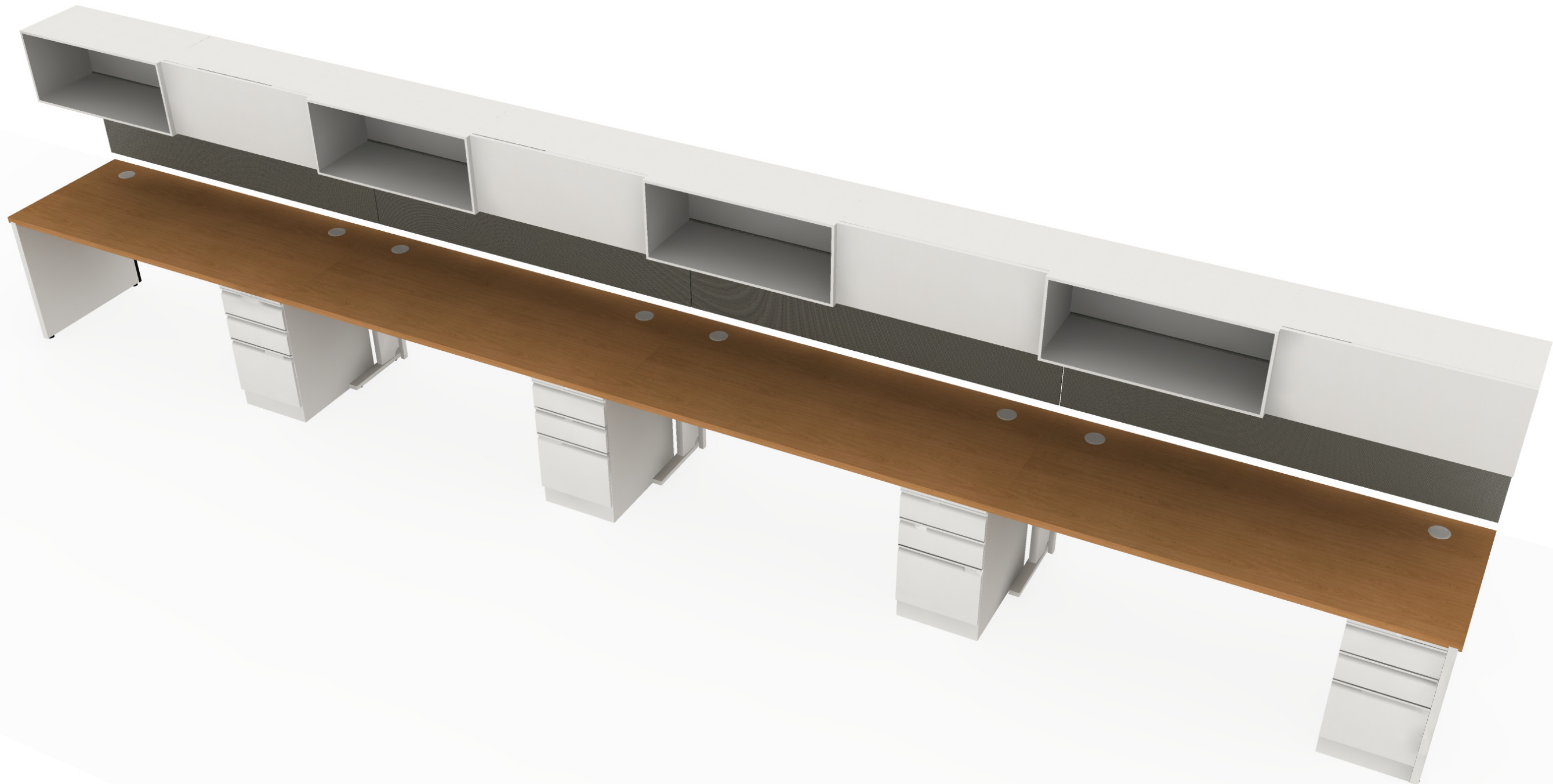
DRAWING: NOT TO SCALE

DESIGNER:
Collin Coffey
coffeyco@honcompany.com
563.299.2829

DATE:
10/16/2020
7:37:24 AM

PROJECT:
83544-4.cmdrw

NORTHBROOK PUBLIC LIBRARY



NOTE: The customer is ultimately responsible for the accuracy and correctness of component counts and measurements. The customer is also responsible for the space planning and all design work of projects. Customer shall verify and confirm all site conditions, dimensions, and suitability of products and applications consistent with published guidelines and applicable codes. Liability of The HON Company shall be limited to the amount charged for the Specification Services rendered and in no event shall The HON Company be responsible for any consequential or incidental damages.

DRAWING: NOT TO SCALE

DESIGNER:
Collin Coffey
coffeyco@honcompany.com
563.299.2829

DATE:
10/16/2020
7:37:25 AM

PROJECT:
83544-4.cmdrw

NORTHBROOK PUBLIC LIBRARY



NOTE: The customer is ultimately responsible for the accuracy and correctness of component counts and measurements. The customer is also responsible for the space planning and all design work of projects. Customer shall verify and confirm all site conditions, dimensions, and suitability of products and applications consistent with published guidelines and applicable codes. Liability of The HON Company shall be limited to the amount charged for the Specification Services rendered and in no event shall The HON Company be responsible for any consequential or incidental damages.

DRAWING: NOT TO SCALE

DESIGNER:

Collin Coffey
coffeyco@honcompany.com
563.299.2829

DATE:

10/16/2020
7:37:27 AM

PROJECT:

83544-4.cmdrw

NORTHBROOK PUBLIC LIBRARY



NOTE: The customer is ultimately responsible for the accuracy and correctness of component counts and measurements. The customer is also responsible for the space planning and all design work of projects. Customer shall verify and confirm all site conditions, dimensions, and suitability of products and applications consistent with published guidelines and applicable codes. Liability of The HON Company shall be limited to the amount charged for the Specification Services rendered and in no event shall The HON Company be responsible for any consequential or incidental damages.

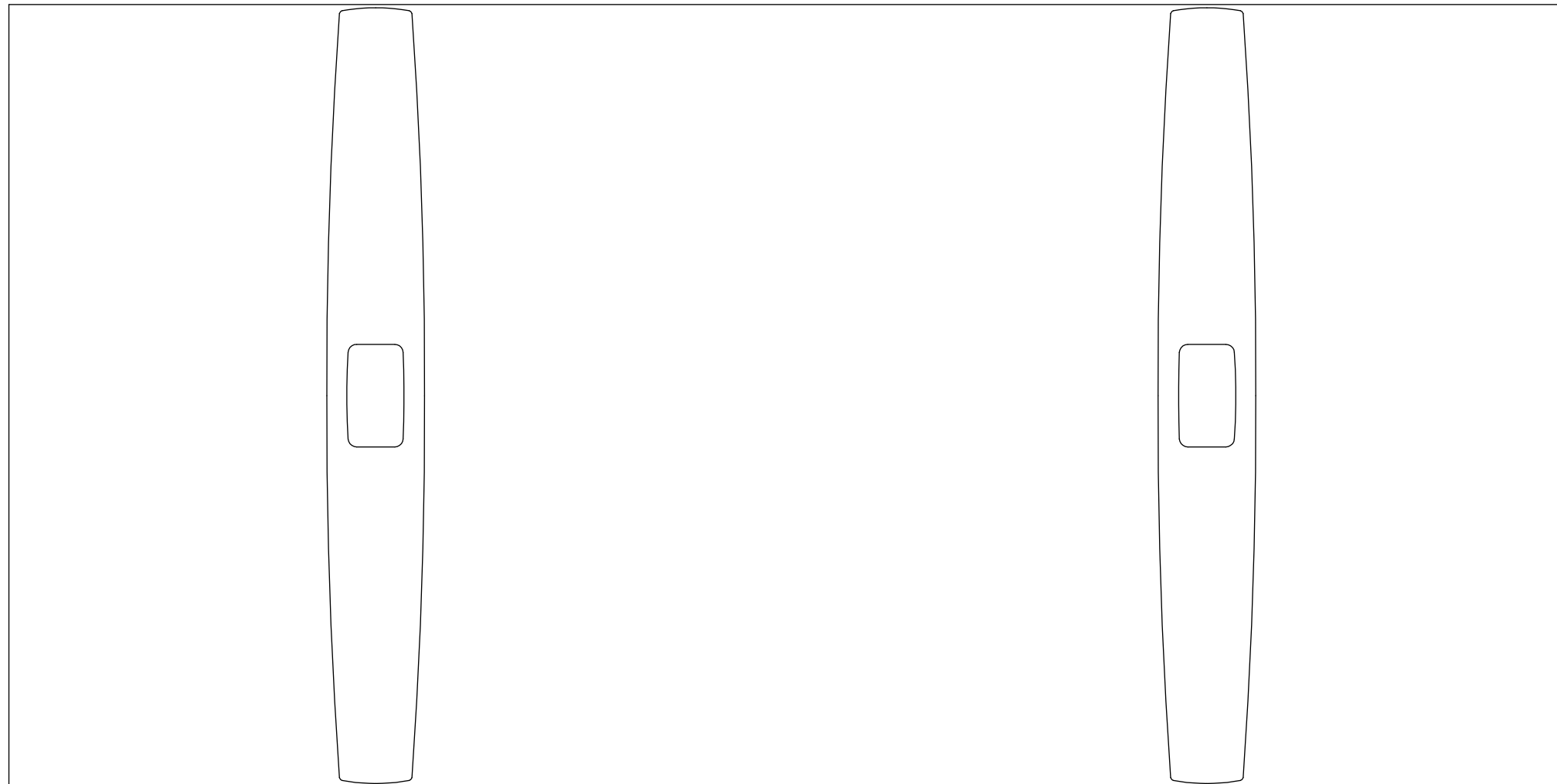
DRAWING: NOT TO SCALE

DESIGNER:
Collin Coffey
coffeyco@honcompany.com
563.299.2829

DATE:
10/16/2020
7:37:28 AM

PROJECT:
83544-4.cmdrw

NORTHBROOK PUBLIC LIBRARY



NOTE: The customer is ultimately responsible for the accuracy and correctness of component counts and measurements. The customer is also responsible for the space planning and all design work of projects. Customer shall verify and confirm all site conditions, dimensions, and suitability of products and applications consistent with published guidelines and applicable codes. Liability of The HON Company shall be limited to the amount charged for the Specification Services rendered and in no event shall The HON Company be responsible for any consequential or incidental damages.

DRAWING: NOT TO SCALE

DESIGNER:
Collin Coffey
coffeyco@honcompany.com
563.299.2829

DATE:
10/16/2020
7:37:30 AM

PROJECT:
83544-4.cmdrw

NORTHBROOK PUBLIC LIBRARY



NOTE: The customer is ultimately responsible for the accuracy and correctness of component counts and measurements. The customer is also responsible for the space planning and all design work of projects. Customer shall verify and confirm all site conditions, dimensions, and suitability of products and applications consistent with published guidelines and applicable codes. Liability of The HON Company shall be limited to the amount charged for the Specification Services rendered and in no event shall The HON Company be responsible for any consequential or incidental damages.

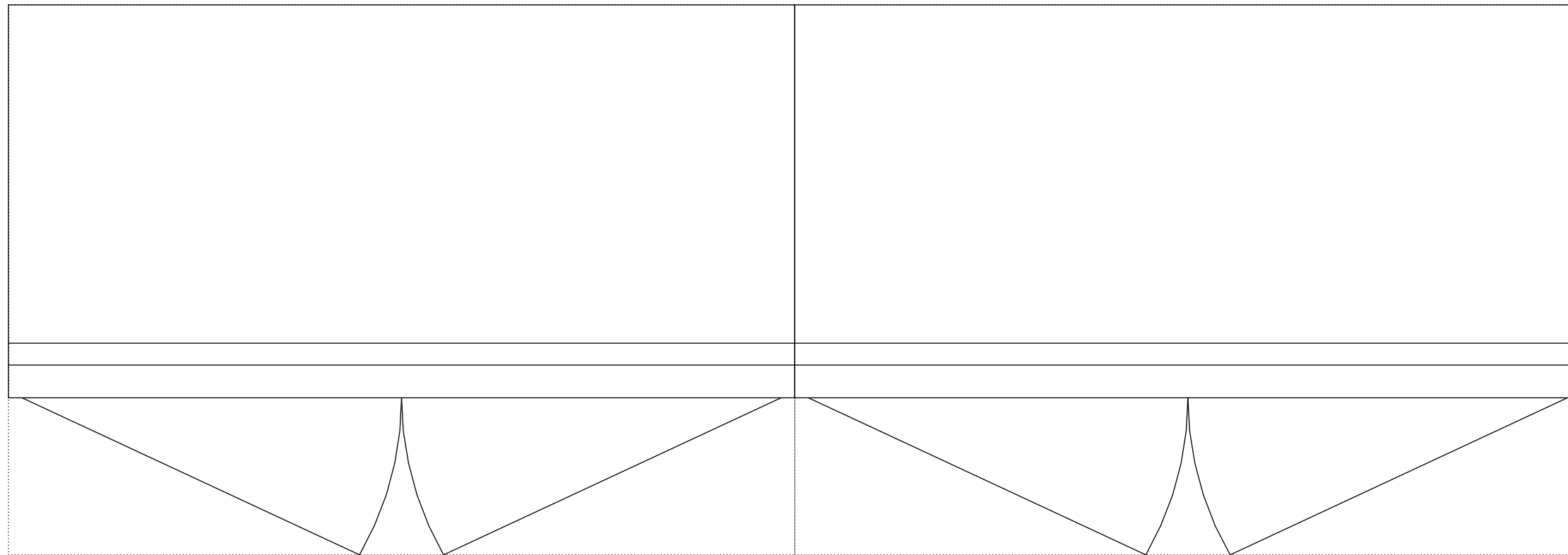
DRAWING: NOT TO SCALE

DESIGNER:
Collin Coffey
coffeyco@honcompany.com
563.299.2829

DATE:
10/16/2020
7:37:31 AM

PROJECT:
83544-4.cmdrw

NORTHBROOK PUBLIC LIBRARY



NOTE: The customer is ultimately responsible for the accuracy and correctness of component counts and measurements. The customer is also responsible for the space planning and all design work of projects. Customer shall verify and confirm all site conditions, dimensions, and suitability of products and applications consistent with published guidelines and applicable codes. Liability of The HON Company shall be limited to the amount charged for the Specification Services rendered and in no event shall The HON Company be responsible for any consequential or incidental damages.

DRAWING: NOT TO SCALE

DESIGNER:
Collin Coffey
coffeyco@honcompany.com
563.299.2829

DATE:
10/16/2020
7:37:33 AM

PROJECT:
83544-4.cmdrw

NORTHBROOK PUBLIC LIBRARY



NOTE: The customer is ultimately responsible for the accuracy and correctness of component counts and measurements. The customer is also responsible for the space planning and all design work of projects. Customer shall verify and confirm all site conditions, dimensions, and suitability of products and applications consistent with published guidelines and applicable codes. Liability of The HON Company shall be limited to the amount charged for the Specification Services rendered and in no event shall The HON Company be responsible for any consequential or incidental damages.

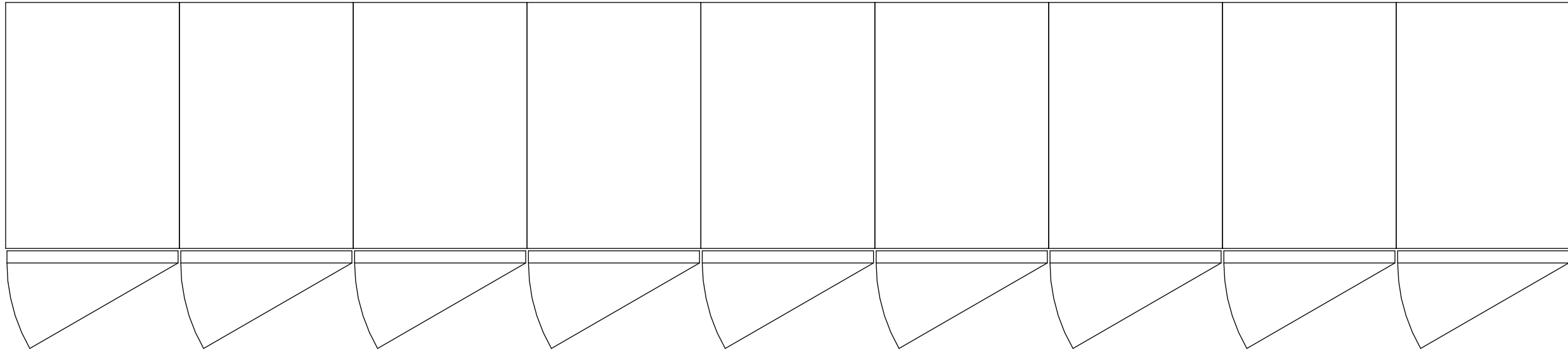
DRAWING: NOT TO SCALE

DESIGNER:
Collin Coffey
coffeyco@honcompany.com
563.299.2829

DATE:
10/16/2020
7:37:34 AM

PROJECT:
83544-4.cmdrw

NORTHBROOK PUBLIC LIBRARY



NOTE: The customer is ultimately responsible for the accuracy and correctness of component counts and measurements. The customer is also responsible for the space planning and all design work of projects. Customer shall verify and confirm all site conditions, dimensions, and suitability of products and applications consistent with published guidelines and applicable codes. Liability of The HON Company shall be limited to the amount charged for the Specification Services rendered and in no event shall The HON Company be responsible for any consequential or incidental damages.

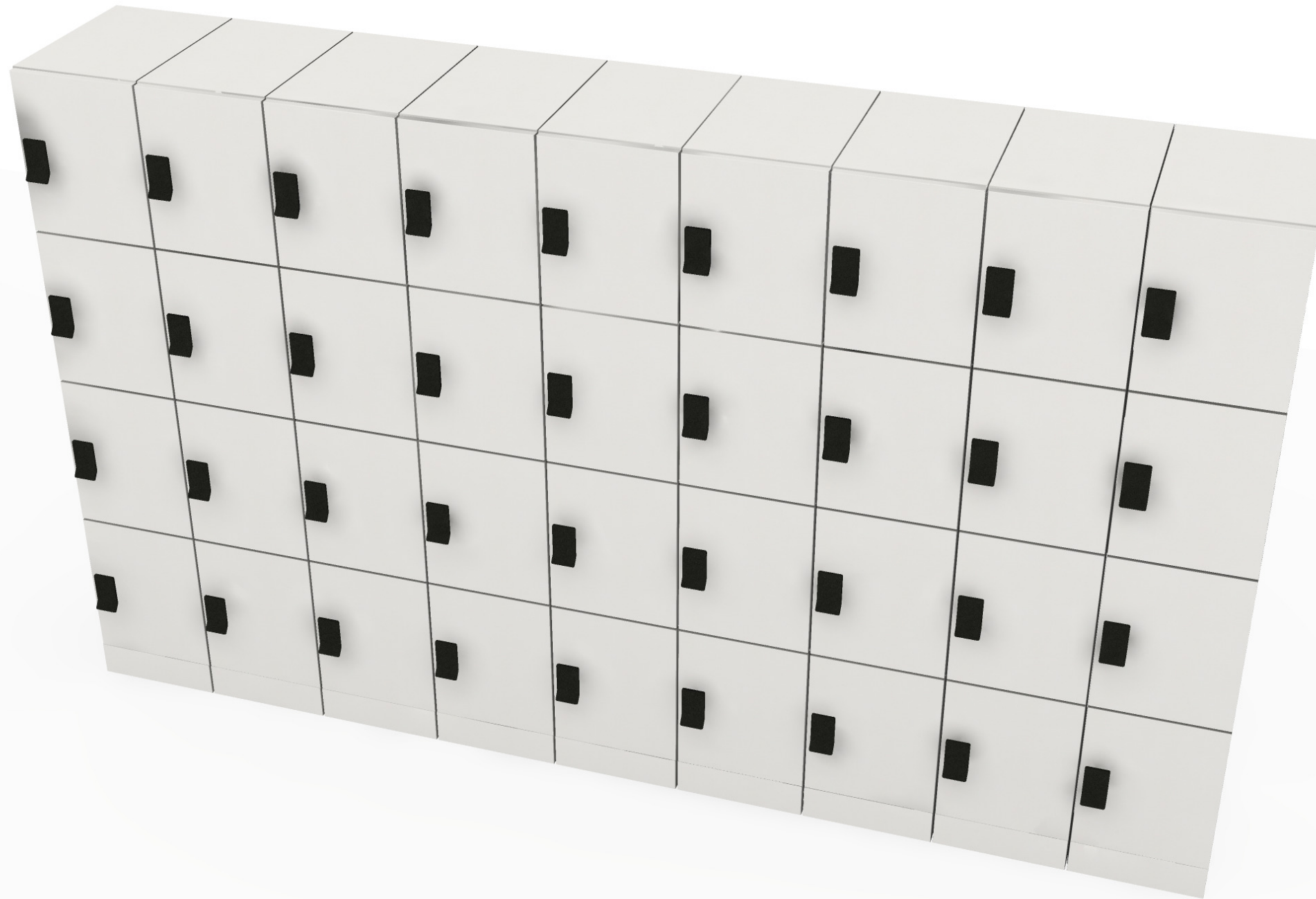
DRAWING: NOT TO SCALE

DESIGNER:
Collin Coffey
coffeyco@honcompany.com
563.299.2829

DATE:
10/16/2020
7:37:36 AM

PROJECT:
83544-4.cmdrw

NORTHBROOK PUBLIC LIBRARY



NOTE: The customer is ultimately responsible for the accuracy and correctness of component counts and measurements. The customer is also responsible for the space planning and all design work of projects. Customer shall verify and confirm all site conditions, dimensions, and suitability of products and applications consistent with published guidelines and applicable codes. Liability of The HON Company shall be limited to the amount charged for the Specification Services rendered and in no event shall The HON Company be responsible for any consequential or incidental damages.

DRAWING: NOT TO SCALE